



InvisiLens Anti-Reflective Gauge Lenses



Installation Guide for 2nd generation MINI Tachometer

325 Sharon Park Dr. #652

Menlo Park, CA 94025

USA

(650) 241-1161

www.fes-auto.com

CONTENTS

Contents.....	2
1. Disclaimer	3
2. Welcome.....	4
3. Handling and Cleaning	5
4. Instructions for 2 nd Gen MINI Tachometer	5
4.1 Unfasten the gauge from the steering column	5
4.2 Remove the back cover of the gauge	5
4.3 Remove the front trim ring	6
4.4 Remove the original lens	7
4.5 Position the new lens	8
4.6 Apply spacers to trim ring	8
4.7 Reassemble trim ring	9
4.8 Reassemble the back cover.....	9
4.9 Restore gauge to the steering column	9
5. Contact Information	10
6. Acknowledgement.....	10

1. DISCLAIMER

USE AT YOUR OWN RISK - USE OF THE PRODUCT MIGHT NOT BE ALLOWED ON PUBLIC STREETS. IT'S THE USER'S RESPONSIBILITY TO USE THE PRODUCT IN ACCORDANCE WITH THE LOCAL LAWS AND RESTRICTIONS.

Do not use this product until you have carefully read the following agreement. This sets forth the terms and conditions for the use of this product.

The installation of this product indicates that the buyer has read and understands this agreement and accepts the terms and conditions.

DISCLAIMER OF LIABILITY

FES, LLC (hereafter SELLER) shall in no way be responsible for the product's proper use and service. THE BUYER HEREBY WAIVES ALL LIABILITY CLAIMS.

The BUYER acknowledges that he/she is not relying on the SELLER's skill or judgment to select or furnish goods suitable for any particular purpose and that there are no liabilities which extend beyond the description on the face hereof and the BUYER hereby waives all remedies or liabilities, expressed or implied, arising by law or otherwise, (including without any obligations of the SELLER with respect to fitness, merchantability, and consequential damages) or whether or not occasioned by the SELLER's negligence.

The SELLER disclaims any warranty and expressly disclaims any liability for personal injury or damages. The BUYER acknowledges and agrees that the disclaimer of any liability for person injury is a material term for this agreement and the BUYER agrees to indemnify the SELLER and to hold the SELLER harmless from any claim related to the item of the equipment purchased. Under no circumstances will the SELLER be liable for damages or expenses by reason of use or sale of any such equipment.

The SELLER assumes no liability regarding the improper installation or misapplication of its products. It is the installer's responsibility to check for proper installation and if in doubt, contact the manufacturer.

LIMITATION OF WARRANTY

FES, LLC (hereafter "SELLER") gives Limited Warranty as to description, quality, merchantability, fitness for any product's purpose, productiveness, or any other matter of SELLER's product sold herewith. The SELLER shall be in no way responsible for the product's open use and service and the BUYER hereby waives all rights other than those expressly written herein. This Warranty shall not be extended or varied except by written instrument signed by SELLER and BUYER.

The Warranty is Limited to one (1) year from the date of sale and limited solely to the parts contained in within the product's kit. All products that are in question of Warranty must be returned shipping prepaid to the SELLER and must be accompanied by a dated proof of purchase receipt. All Warranty claims are subject to approval by FES, LLC.

Under no circumstances shall the SELLER be liable for any labor charged or travel time incurred in diagnosis for defects, removal or reinstallation of this product, or any other contingent expenses. If the BUYER sends back a failed unit that is out of warranty and chooses to buy a refurbished unit, the refurbished unit will only carry a 60 day warranty. If the BUYER purchases a new unit at a predetermined discounted rate, it will have the standard 1 year warranty.

Under no circumstances will the SELLER be liable for any damage or expenses insured by reason of the use or sale of any such equipment.

IN THE EVENT THAT THE BUYER DOES NOT AGREE WITH THIS AGREEMENT: THE BUYER MAY PROMPTLY RETURN THIS PRODUCT, IN A NEW AND UNUSED CONDITION, WITH A DATED PROOF OF PURCHASE, TO THE PLACE OF PURCHASE FOR A FULL REFUND.

THE INSTALLATION OF THIS PRODUCT INDICATES THAT THE BUYER HAS READ AND UNDERSTANDS THIS AGREEMENT AND ACCEPTS ITS TERMS AND CONDITION

2. WELCOME

Thank you for your purchase of the InvisiLens Anti-Reflective Gauge Lens Kit!

This guide includes installation instructions for the Tachometer in the 2nd generation MINI (models R55, R56 and R57). Lenses for the 2nd generation Speedometer and Openometer are under development.

InvisiLens is also available for all factory gauge configurations of the 1st generation MINI (models R50, R52, R53).

3. HANDLING AND CLEANING

- Handle lenses by edges to avoid fingerprints.
- Both sides of the lens are the same (no front and back).
- Use an ammonia-free glass cleaner to clean the anti-reflective lens. First apply cleaner to a microfiber or lint-free cotton cloth, then wipe.
- Do not use regular plastic or acrylic cleaners, or ammonia based cleaners. They leave a film on the surface that interferes with the anti-reflective quality.
- Alcohol based cleaners work well, such as computer monitor wipes.

4. INSTRUCTIONS FOR 2ND GEN MINI TACHOMETER

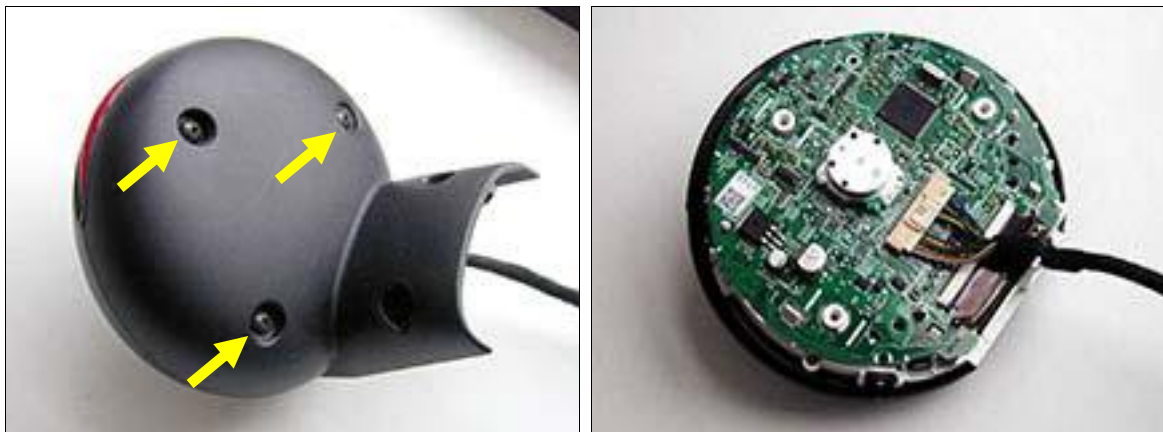
4.1 UNFASTEN THE GAUGE FROM THE STEERING COLUMN

Before starting, extend the steering column to maximum length and tilt to lowest position for easiest access.

Remove the two Torx screws (T25-T30) that attach the gauge to the steering column. The gauge will become loose except for the wiring harness.

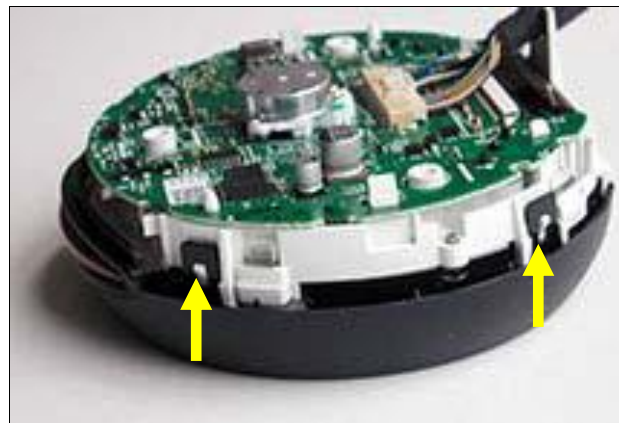
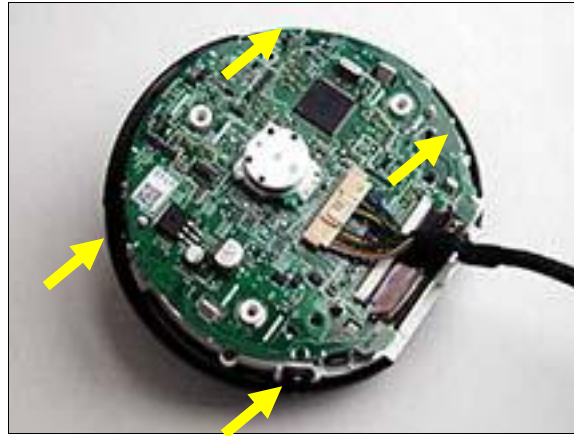
4.2 REMOVE THE BACK COVER OF THE GAUGE

Remove 3 screws (Phillips#2) at the back of the gauge. After screws are removed, pull off the back cover.



4.3 REMOVE THE FRONT TRIM RING

Release the 4 black clips that attach the trim ring, and remove the ring.



Shown with trim ring removed:



4.4 REMOVE THE ORIGINAL LENS

Remove the original lens by releasing the 4 clips holding the lens



Shown with lens removed:



4.5 POSITION THE NEW LENS

Place the new lens on top of the dial. Insert buttons through the lens holes.



4.6 APPLY SPACERS TO TRIM RING

The kit includes two pieces of adhesive backed foam rubber. Remove the protective backing and stick the pieces into the groove channel inside the trim ring, at 3 and 9 o'clock positions.



4.7 REASSEMBLE TRIM RING

Position the trim ring over the gauge and align the tabs.



Snap the trim ring onto the gauge, and ensure that all 4 tabs engage completely.



4.8 REASSEMBLE THE BACK COVER

Snap the back cover on and attach with the 3 screws. Make sure that all pieces are lined up and fit completely together.

4.9 RESTORE GAUGE TO THE STEERING COLUMN

Reconnect the wiring harness to the gauge.

Fasten the gauge to the steering column with the two Torx screws. **Note:** It is easy to cross thread these screws. Check carefully during this step.

5. CONTACT INFORMATION

Support can be obtained by contacting us via:

Phone: (650) 241-1161

E-Mail: support@fes-auto.com

Web: www.fes-auto.com/support

6. ACKNOWLEDGEMENT

This product was conceived, prototyped and produced by Richard Woo (rkw on various online MINI forums). Richard is a software engineer in the San Francisco Bay Area, and asked FES to help bring this to the wider MINI community. Without Richard, this wouldn't exist. Good job Richard!