



TrackCoach™ ProShift I/O Beta

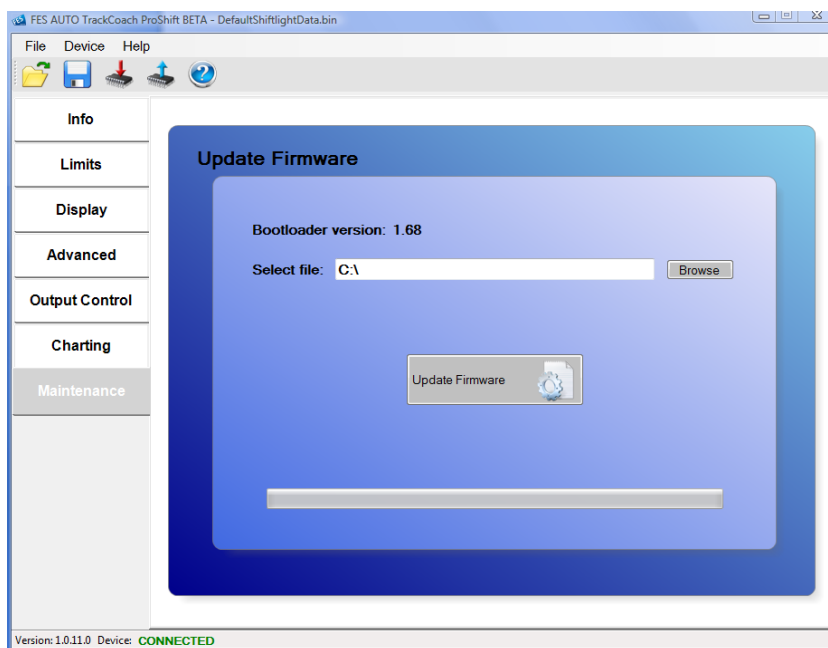
Firmware Upgrade

STEP 1 Save the new firmware on your computer

- Save the new firmware (*.hex file) in a directory on your computer (for example on your desktop)

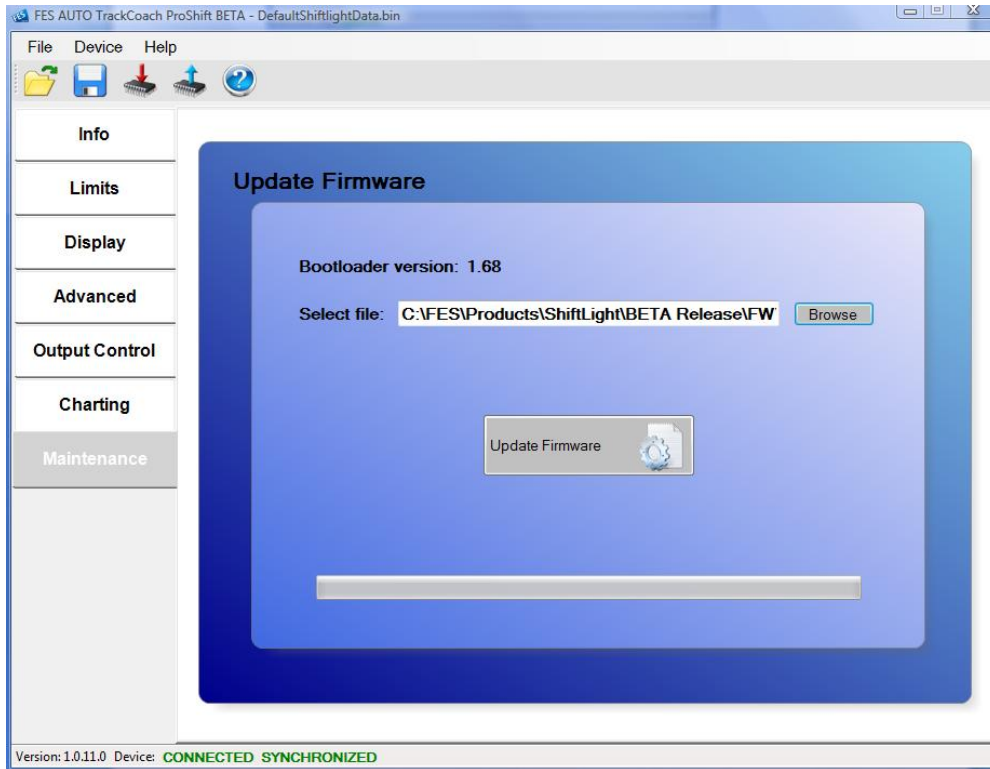
STEP 2 Go to maintenance tab

- Connect the ProShift via the USB port to your computer
- Start the ProShift Application
- Select the “Maintenance Tab”
- You will see the following screen:



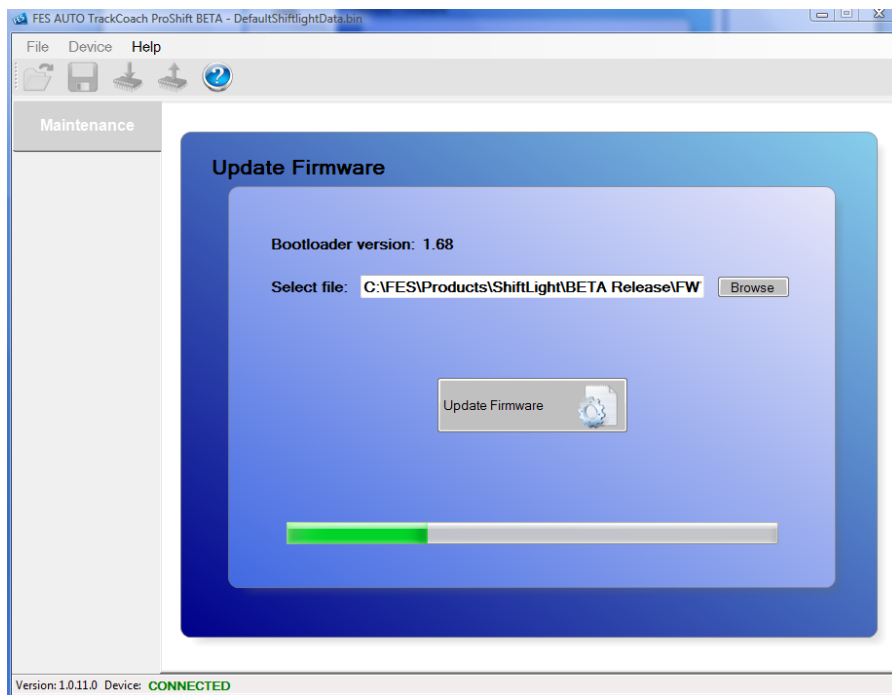
STEP 3 Select new firmware file

- Browse to the new firmware file by clicking on the “Browse” button.
- Once selected, the filename and path will be shown:
-



STEP 4 Initiate firmware upgrade

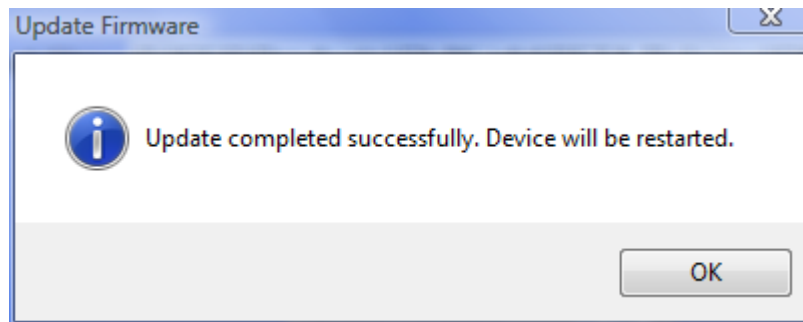
- Click on “Update Firmware”
- The ProShift will start flashing Green (indicating that it’s in firmware upgrade mode)
- After a few seconds, the firmware is written to the ProShift. The progress is shown in the Progress bar:



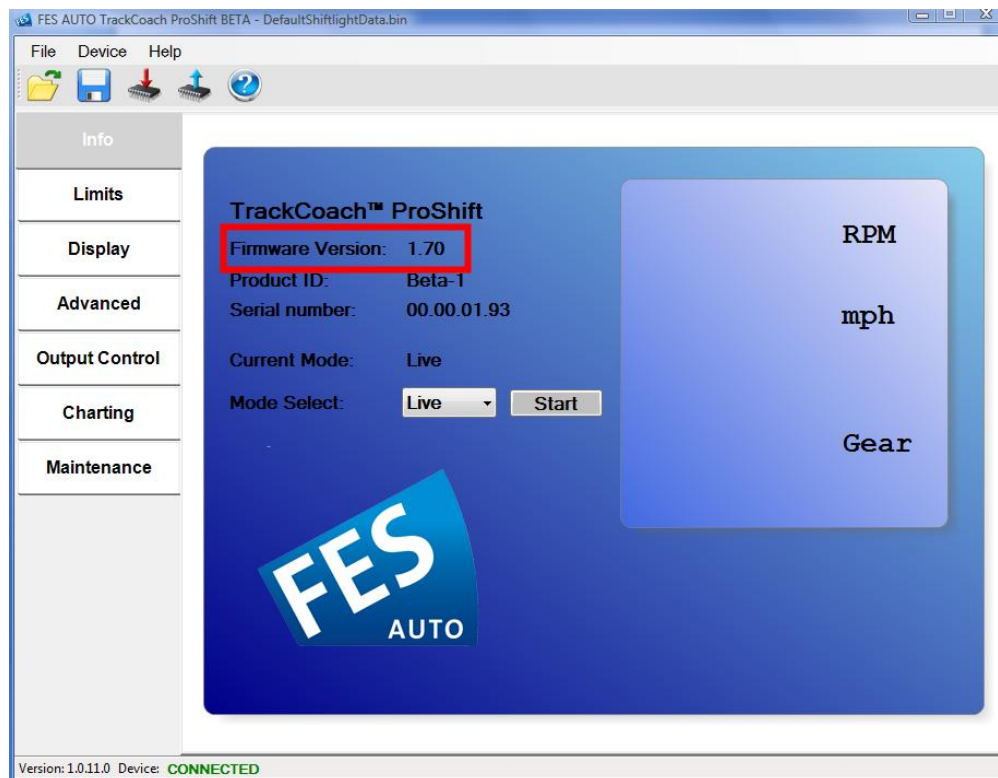
NOTE: if this is the first time you’re using the firmware upgrade feature, the software will ask you to install the necessary driver. Follow the instructions from the Driver Installation Manual to do this.

STEP 5 Finish

- After the firmware was successfully upgraded, the following pop-up will appear:

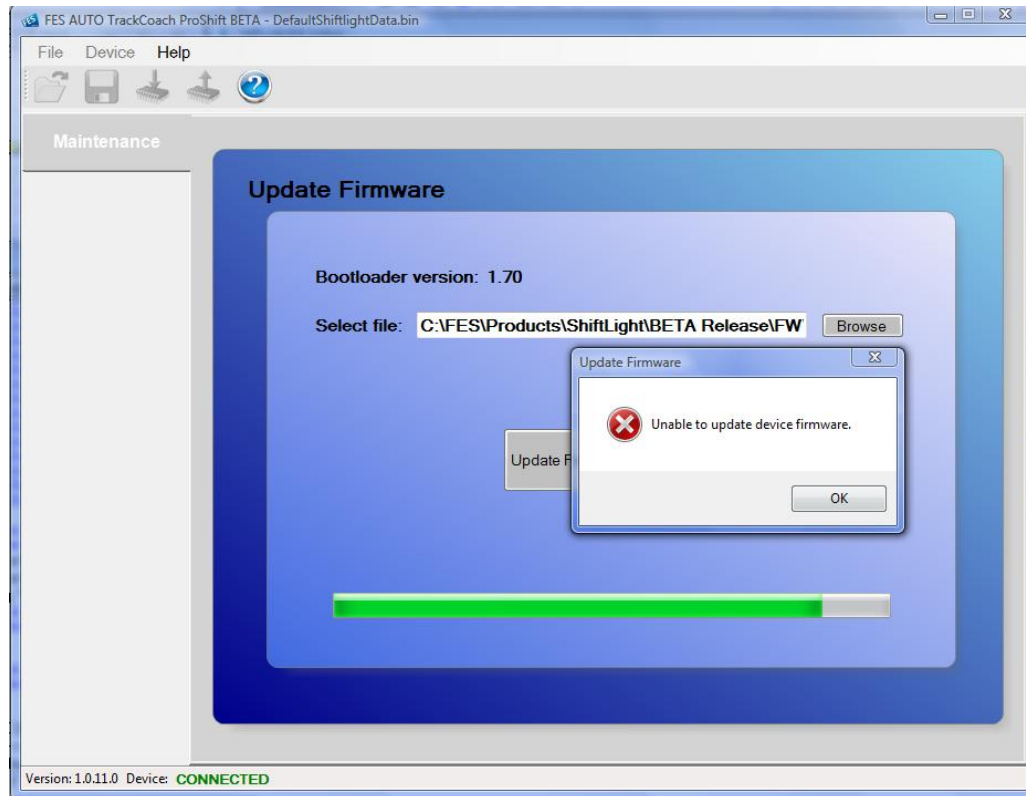


- Click OK to restart the ProShift
- The main screen will now show the new firmware revision:



Troubleshooting

- On rare occasions, the firmware upgrade can fail:



- If this happens do the following:
 - o Click OK to close the pop-up window
 - o Exit the application
 - o Unplug the ProShift from your computer
 - o Connect the ProShift to your computer
 - o Start the application. The application will immediately switch to the maintenance tab.
 - o Repeat Step 3, 4 and 5